



# PATERNOSTER

*Oppidraai*

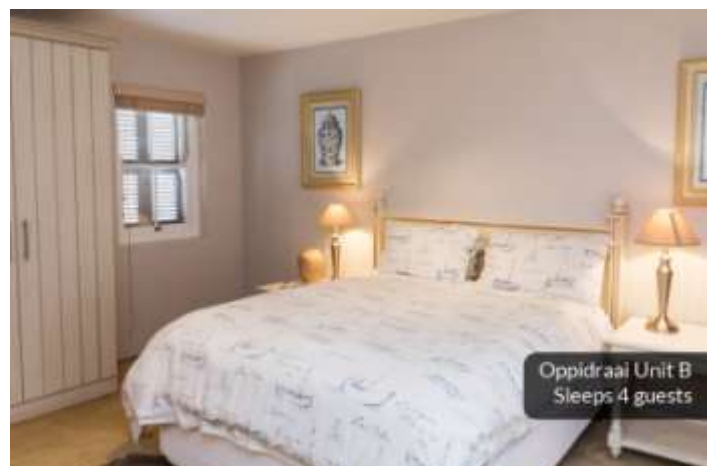
**CENTRAL RESERVATIONS**  
Tel: 087 820 5999 or 022 752 2044  
bookings@southofafrica.com  
www.southofafrica.com



Just 150km north of Cape Town lies Paternoster, a picturesque old fishing village on the Cape West Coast. Framed by indigenous fynbos, beautiful white sand beaches and craggy rocks hugging the Atlantic Ocean, Paternoster's wild beauty is reflected in its brightly coloured fishing boats scattered along the shore and blue-shuttered whitewashed houses reminiscent of the Greek islands. For jaded city dwellers and travellers who want to escape to a tranquil place, Paternoster is the perfect seaside getaway.

In South Africa's oldest fishing village, South of Africa offers comfortable self-catering accommodation in two separate cottages called Oppidraai A and B. Situated on the outskirts of the quaint seaside village, and within walking distance of a beach, each of these cottages has its own unique character. Here, couples, small families or friends can spend time relaxing together to enjoy the tranquil simplicity of Paternoster.

Both these spaciouly comfortable cottage units combine beach and farmhouse features to enhance their stylish interiors. Located on the quieter outskirts





# PATERNOSTER

*Oppidraai*

**CENTRAL RESERVATIONS**  
 Tel: 087 820 5999 or 022 752 2044  
 bookings@southofafrica.com  
 www.southofafrica.com



Oppidraai Unit B  
 Sleeps 4 guests

of Paternoster, they offer a relaxing space for friends, couples or small families.

**Oppidraai Unit A's** rustic ambience is characterised by its earthy clay floors, whitewashed wooden ceilings and dark wooden antiques that blend with rattan and cane furniture. This cottage sleeps six people in three comfortable double bedrooms.

**Oppidraai Unit B** sleeps four and has a more beach like ambience, with its whitewashed A-frame wooden ceiling beams, rattan/cane furnishings and a welcoming living area with glass doors that open up onto a large patio with partial views of the Atlantic ocean.



Oppidraai Unit A  
 Sleeps 6 guests



Oppidraai Unit A  
 Sleeps 6 guests



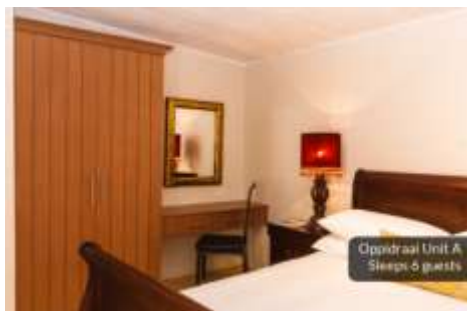
Oppidraai Unit A  
 Sleeps 6 guests

## FACILITIES:

**Oppidraai Unit A** has two double bedrooms leading off the living area, of which one has an en-suite bathroom with shower. The cottage also has an additional guest toilet.

The upstairs double bedroom has an en-suite bathroom with shower and its own private balcony. Whitewashed wooden ceilings with roof windows bathe the room with light, complementing the dark wooden antique furnishings against a blend of white and gold decor elements.

The spacious living area features an open plan kitchen, dining and lounge area, complete with its own indoor barbeque. Rattan furniture, screed clay floors and an oversized comfy couch in the lounge area flow onto an outside patio balcony with braai. The fully equipped kitchen has wooden counter tops, fridge/freezer, microwave and four-plate stove with glass plates.



Oppidraai Unit A  
 Sleeps 6 guests



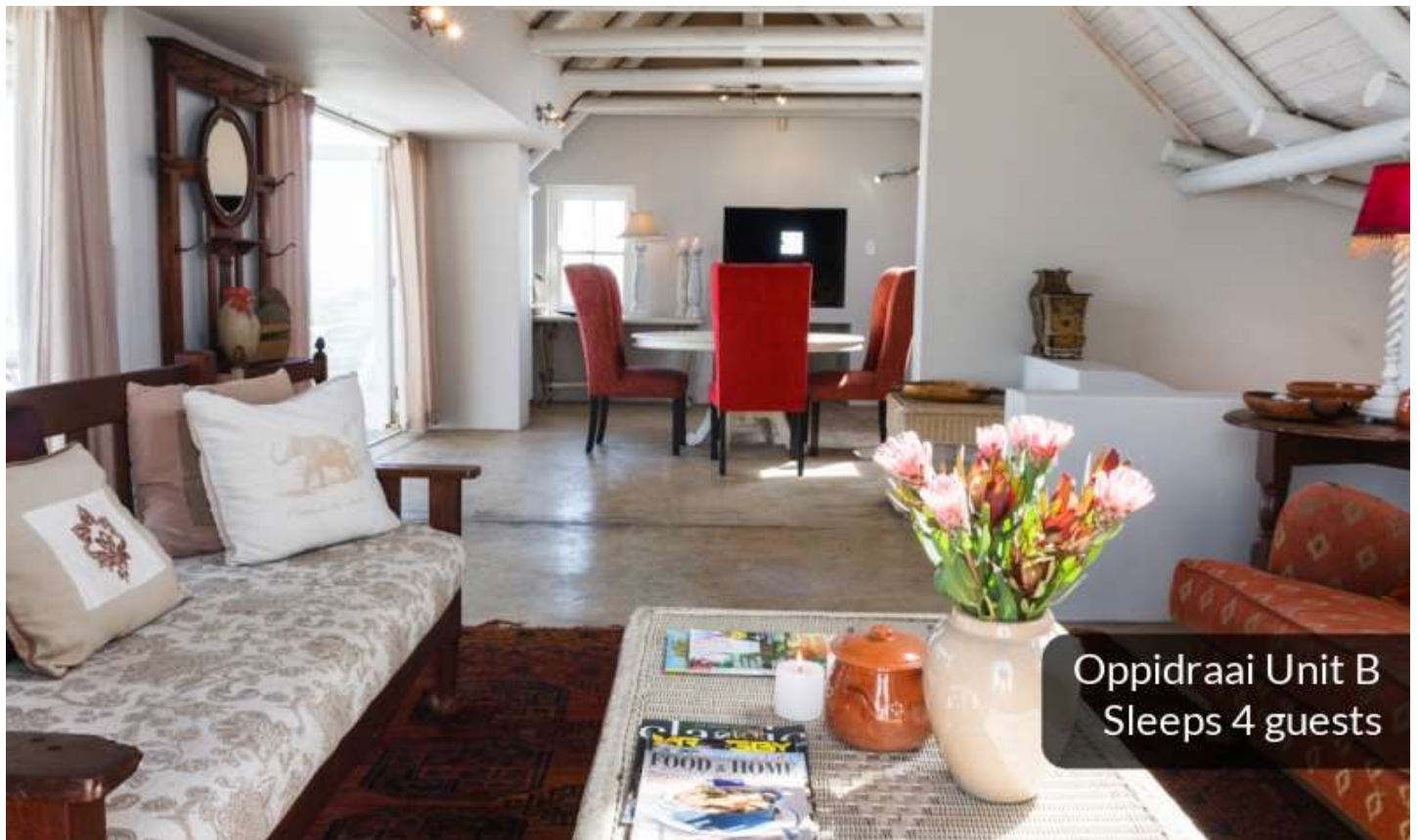
Oppidraai Unit A  
 Sleeps 6 guests



Oppidraai Unit A  
 Sleeps 6 guests

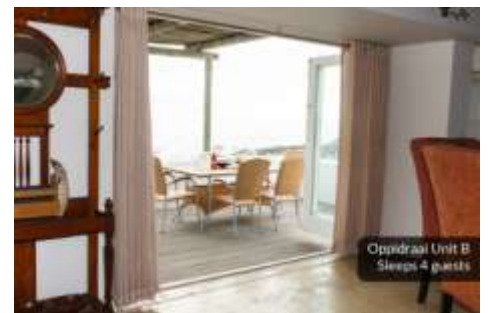
**What makes Oppidraai Unit A cottage special?**

- Rustic self-catering comfort in the quieter section of the village.
- Suitable for small families or group of friends (maximum 6 guests).
- Within walking distance of a secluded beach and approximately two km from the village centre.



**Oppidraai Unit B** has a spacious upstairs living space with **partial sea views**. The living area features a lounge/dining area that leads onto an open-plan kitchen with whitewashed cupboards and its own indoor barbeque fireplace. This is a lovely place to light a log fire and cuddle up on the enormous couch in winter.

Big glass doors lead out onto a large outside covered patio with wooden flooring and barbeque area – a peaceful space to socialise and enjoy the sea view over sundowners. The unit also has TV with select DSTV channels.





# PATERNOSTER

Oppidraai

**CENTRAL RESERVATIONS**  
Tel: 087 820 5999 or 022 752 2044  
bookings@southofafrica.com  
www.southofafrica.com

The well-equipped kitchen, featuring a quirky ceiling window to maximise the natural sunlight, has a fridge/freezer, microwave and four-plate stove with glass plates. The living area's decor and furnishings are an eclectic blend of beach house and country style, quietly blending antiques, simple rugs, bleached cane coffee tables and rattan chairs that are offset by white washed walls and wooden beams.

Downstairs, both the two double bedrooms have their own en-suite bathrooms, with doors that lead out onto an outside patio area. One bathroom has a shower only, while the other has both a bath and shower. The cottage also has a guest toilet.



### What makes Oppidraai Unit B special?

- Spacious covered patio and outside braai area offering partial sea views.
- Good flow from one area to the other makes it perfect for two couples or friends (maximum four guests).
- Located on the quiet outskirts of the village, this beach cottage is well placed to ensure a relaxing holiday.
- A beautiful secluded beach is just a short walk away, and approximately two km from Paternoster village centre.



*Please note that keys are collected at Abalone House.*



**CENTRAL RESERVATIONS**  
Tel: 087 820 5999 or 022 752 2044  
bookings@southofafrica.com  
www.southofafrica.com

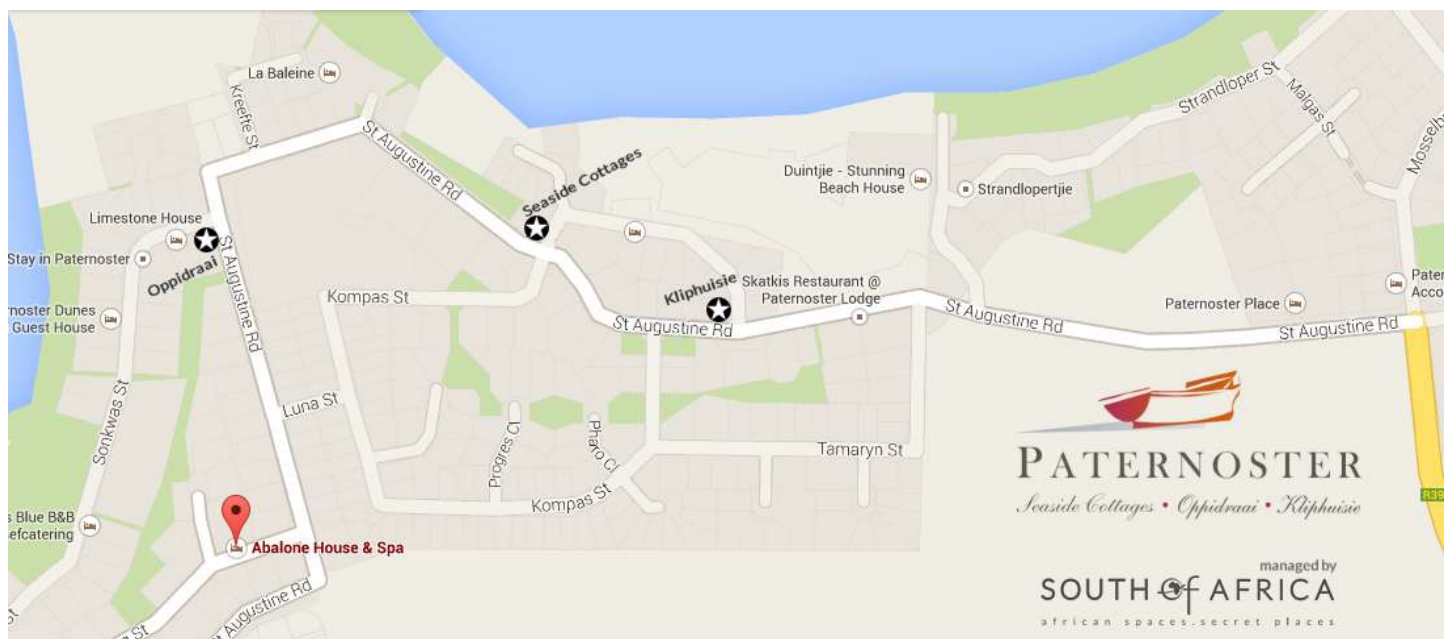
#### GPS COORDINATES OF OPPIDRAAI

Latitude: -32.8091  
Longitude: 17.88478

#### DIRECTIONS:

From Cape Town: travel north on the R27, turn left at the Vredenburg turn-off and travel through Vredenburg to Paternoster. The entire trip is  $\pm$  140km.

From Cape Town International Airport: travel towards Cape Town on the N2, take the N7 - Malmesbury/Goodwood turnoff (Vanguard Drive) and turn right towards Malmesbury. Travel north on the N7 and turn left at the Melkbosstrand turn-off. Continue to the R27. Turn right onto the R27 and travel north, past Yzerfontein and Langebaan until you get to the Vredenburg turn-off. Turn left at the Vredenburg turn-off and travel through Vredenburg to Paternoster. The entire trip is  $\pm$  155km



#### KEY DEPOSIT:

A R500.00 deposit is required in the event of any breakages or loss of any of the items found in your unit. Should there be any breakages or loss of any of the items in your unit, the deposit is then not returnable. If all is in order then your deposit will be returned on your departure.

#### CONTACT US:

Central Reservations: 087 820 5999  
Direct: 022 752 2044  
bookings@southofafrica.com | www.southofafrica.com